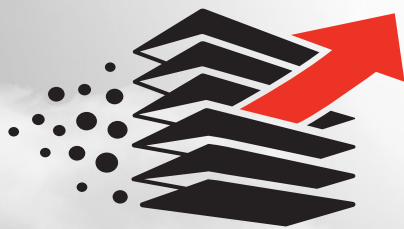


INTRODUCING



FINER  **FLOW**
WITH PRECISION-PLEAT TECHNOLOGY™



HEAVY DUTY AIR FILTERS

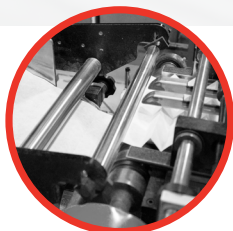
★ ★ ★ Made in America to Meet or Exceed OE Requirements ★ ★ ★

LUBER  **FINER**

Luber-finer - U.S.A. Hotline: 800-882-0890 • www.finerflow.com

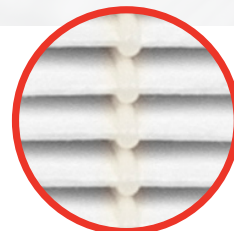
WHAT MAKES **PRECISION-PLEAT** TECHNOLOGY BETTER?

American-made manufacturing equipment, filtration media and a hybrid adhesive – all specifically designed for Finer-Flow filters – combine to create Luber-finer's new pleating technology.

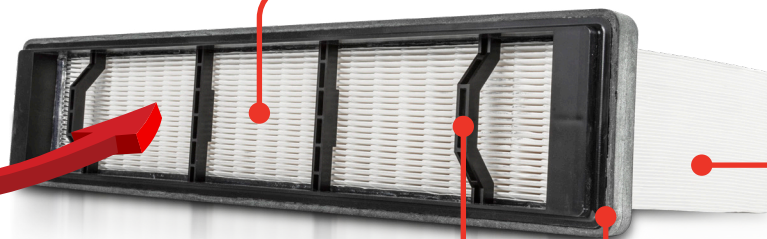


100% machine-controlled manufacturing ensures consistent product quality

Custom-formulated adhesive beads create precise, even separation between each pleat for maximum dirt-holding capacity



Stitched internal support structure enables direct air flow to minimize intake air turbulence and pressure drop

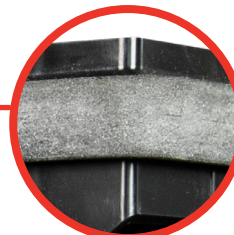


Tall pleats with compact pleat spacing deliver the maximum amount of filtration surface area



Rugged, high-impact plastic frame (with built-in handles on some models) withstands extreme operating conditions

Soft gasket allows for precision sealing and easy installation



A RARE BREED OF AIR FILTER, BUILT TO DO MORE IN THE USA

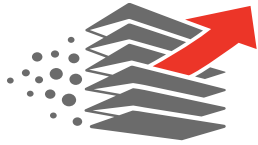
Finer-Flow continues Luber-finer's long-standing tradition of creating innovative filtration technology at our U.S.-based research, development and manufacturing centers. Years of exploring new media designs, materials and chemistry have resulted in a product that outperforms competing air filters and meets or exceeds OE requirements.



LUBER-FINER DEVELOPED AND TESTED IN THE USA.



**TESTED FOR
OUTSTANDING
DURABILITY**



**TRAP
MORE DIRT**

With Enhanced Technology



**OPTIMIZE
PERFORMANCE**

With Maximum Air Flow



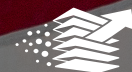
**PROTECT
YOUR ENGINE**

With OE-Leading Efficiency

**CONVENIENT HANDLES
FOR EASY INSTALL**



MANUFACTURED ON EQUIPMENT BUILT IN THE USA.



FINER FLOW
WITH PRECISION-PLEAT TECHNOLOGY™

OUTSTANDING COVERAGE FOR THE MOST POPULAR ON-ROAD APPLICATIONS

PART #	APPLICATION	ENGINES	MODEL YEARS	FILTER SHAPE	OE#	BALDWIN	DONALDSON	FLEETGUARD	FRAM	WIX
LAF6260A	Freightliner Cascadia, Coronado, Century	Cat C15, Cummins ISX, Detroit Diesel DD13,15,16	2008 - Current	Rectangle	P6106260	CA5790	P618478	AF247879	CA11249	49478
LAF6725A	Kenworth T680 & 880, Peterbilt 567 & 579	Cummins ISX & X15 PACCAR MX 11 & 13	2012 - Current	Rectangle	P621725	PA32000	P637453	N/A	N/A	WA11058
LAF6730A	Kenworth T680, Peterbilt 567 & 579	PACCAR PX9, Cummins ISX	2014 - Current	Rectangle	P621730	PA32003	P637454	N/A	N/A	WA11077
LAF9104A	International 4300, 4400 DuraStar, TerraStar	Cummins ISB, L MaxxForce DT, 7, 9	2012 - Current	Square	2602212C1	PA32001	P623400	AF4222	N/A	WA10804

BUILT TO DO MORE

From our American manufacturing and distribution facilities, Luber-finer makes a worldwide impact on the heavy-duty industry by sticking to two basic principles: Deliver a level of customer service that reflects our company values, and make continuous advancements in filtration technology.

Finer-Flow is our latest example of the second principle. By providing more protection from contaminants in critical areas and solving more filtration challenges with engineering innovations, Luber-finer is dedicated to keeping your fleet moving. That's why we're one of the world's most trusted filter brands.

FIND YOUR FILTER WITH OUR DIGITAL RESOURCES

Visit luberfiner.com or download our mobile app to get quick access to the information you need to find the right filter for a specific heavy-duty application.

ONLINE PARTS CATALOG:

Find the part number and specification details for any Luber-finer filter.

DISTRIBUTOR LOCATOR:

Enter your zip code and select a mile radius to find nearby distributors.

CROSS REFERENCE:

Enter the part number of another brand's filtration product to obtain a part number and part description for a comparable Luber-finer filter.

PART SEARCH:

Enter a Luber-finer part number to obtain a part description, part dimensions and vehicle compatibility information.



LUBER-FINER®
BUILT TO DO MORE®

Luber-finer USA®

Hotline: 800-882-0890 • www.finerflow.com

A Proud Distributor of Luber-finer® Products.