



POWER SOAK SYSTEM

ADVANCED CONTINUOUS POT, PAN & SHEET PAN WASHING SYSTEM WITH SCRAP SINK, MODEL PSA

The Power Soak Advanced System is a three-bay continuous pot, pan and sheet washing system with pre-configured lengths and configurable options. The patented parallel wash system's washing wave action, with wash jets located every 6 inches along the back wall of the wash tank, continuously rotates wares from the back of the wash tank up to the operator in hot soapy water that removes baked-on food soils, providing unparalleled results with an excellent ROI.

SHORT FORM SPEC: Power Soak Advance Dishtable, left-to-right operation, 96-120"W, with wash tank, (1) wash jet per 6 inches, scrap sink, rinse compartment, sanitizer compartment, clean drain board, end splash, PS-200 controls, 1/2" pre-rinse spray, 3/4" high flow faucet, sheet pan rack hooks, stainless steel utensil basket, ball valve drains, 14/304 stainless steel, bullet feet, NSF, CE, UL, ETL, Made in USA.

AVAILABLE MODELS:

PSA-96L-36-S
PSA-102L-36-S
PSA-102L-42-S
PSA-108L-36-S
PSA-108L-42-S
PSA-114L-42-S
PSA-114L-48-S
PSA-120L-42-S
PSA-120L-48-S

STANDARD SPECIFICATIONS:

- Left to right flow configuration
- Pre-configured lengths from 96" to 120" in 6" increments, 34" front to back depth
- All tanks and tabling, 14 gauge, 304 stainless steel
- System conforms to ANSI/NSF Standard 2 with all welds to be heliarc (TIG) welds
- Backsplash to be 9.5" overall height - 6" vertical with 45 degree angle to wall with 1-1/2" turn up
- Channel front rim
- 12" scrap sink with 1" end splash
- Wash tank shall be 28.75" I.D standard front to back to back by 21" deep
- Parallel wash flow with low profile wash jets spaced every 6" flush along the back wall of wash tank & above the wash pump intake
- 2 HP wash pump motor (36-48" tank) with stainless steel impeller, pump housing and wash manifold
- Stainless steel wash pump intake to run full length of the rear of the wash tank below wash jets
- Stainless steel wash pump housing fully self-draining with no use of drain line or valve
- Stainless steel utensil basket powered by one dedicated wash jet
- Dual liquid high & low water level sensors
- Bottom of wash tank creased to facilitate draining
- 7000 watt wash tank heater maintains wash tank temperature at 115° +/- 1/2 °F
- Chemical injection points pre-drilled at factory
- Wash tank to have 1/4" plate stainless steel hooks welded to rear of tank with dimples on front channel enabling optional sheet pan racking system to be installed where sheet pans are loaded and stand vertically from front to back of wash tank

- Rinse sink shall be 28.75" I.D. front to back
- Sanitizer sink shall be 28.75" front to back
- Clean drain board with 1" end splash
- 1/2 pre-rinse sprayer, 3/4" high flow faucet
- (3) 1-1/2" drains & faucets included, but optional
- Bullet feet

CONTROLS:

PS-200: Timed wash cycle, wash tank heat, sanitizer tank cycle monitoring. All controls include at minimum:

- Four hour wash timer
- Low voltage power is supplied to all operator controls and sensors
- Operator controls - Green (ON)/Red (OFF) buttons
- Automatically monitors and regulates wash water temp
- Monitors high and low liquid levels in both the wash tank and sanitizer tank
- Meets UL 50, category 4X specifications

INSTALLATION REQUIREMENTS:

- Unit requires hot and cold water connections
- Drain connections
- Single point electrical connection

ELECTRICAL CONNECTION OPTIONS:

230V/60/3, 24.0 Amps
480V/60/3, 11.6 Amps

CONFIGURATION OPTIONS:

- Right to left flow configuration
- PS-225 Controls: All PS-200 features included plus adjustable sanitizer tank cycle monitoring, batch washing, non-intrusive function lights (see control specification for more detailed features)
- Wash jets every 3" with required Advanced Wash Insert (AWI) (sheet pan racks not available with AWI) — changes depth to 37" front to back
- 2.5 KW wash tank heater
- 21" deep rinse and sanitizer (available on select models only)

WARRANTY: 3 years for parts and labor

Certifications:



| | |
|---------------|-------|
| PROJECT NAME: | |
| LOCATION: | |
| ITEM NO: | |
| QTY: | |
| MODEL NO: | |
| AIA NO: | |
| SIS NO: | |
| CSI SECTION: | 11400 |



Shown with optional PS-225 control and sheet pan racks

OPTIONAL ACCESSORIES:

Stainless steel sheet pan racks:

36" wash tank:

3 sheet pan rack

10 sheet pan rack

42" wash tank:

6 sheet pan rack

10 sheet pan rack

48" wash tank:

6 sheet pan rack

14 sheet pan rack

Flanged feet

Special crating (for models over 108" in length)

Advanced Wash Insert (AWI) consisting of (1) ultra-high molecular weight polyethylene (UHMW) flexible tank divider, or (2) with sheet pan racks, (UHMW) wash tank flow guide, high density polyethylene (HDPE) rib system integrally connected with sst rods and 1/8" thick UHMW tank liner form fitting to bottom of wash tank — changes wash jet location to every 3" along the back wall

ADDITIONAL RESOURCES:

[Request A Quote](#)

[Sales Tools](#)

[Find A Rep](#)

Power Soak System
44930 RevH
08/23

| Part No. | Length (Dimension A) | CONFIGURATIONS OF UNIT FROM LEFT TO RIGHT | | | | | | |
|---------------|-------------------------|---|------------|--------------------------|---------------------------|-------------------------------|----------------------|------------|
| | | End Splash | Scrap Sink | Wash Tank (Section A) | Rinse Tank (Section B) | Sanitizer Tank (Section B) | Clean Drain Board | End Splash |
| PSA-96L-36-S | 96" | 1" | 12" | 36" x 21" | 16" x 18" | 18" x 18" | 12" | 1" |
| PSA-102L-36-S | 102" | 1" | 12" | 36" x 21" | 20" x 14" | 20" x 14" | 12" | 1" |
| PSA-102L-42-S | 102" | 1" | 12" | 42" x 21" | 16" x 18" | 18" x 18" | 12" | 1" |
| PSA-108L-36-S | 108" | 1" | 12" | 36" x 21" | 20" x 14" | 20" x 14" | 18" | 1" |
| PSA-108L-42-S | 108" | 1" | 12" | 42" x 21" | 20" x 14" | 20" x 14" | 12" | 1" |
| PSA-114L-42-S | 114" | 1" | 12" | 42" x 21" | 20" x 14" | 20" x 14" | 18" | 1" |
| PSA-114L-48-S | 114" | 1" | 12" | 48" x 21" | 20" x 14" | 20" x 14" | 12" | 1" |
| PSA-120L-42-S | 120" | 1" | 12" | 42" x 21" | 20" x 14" | 20" x 14" | 24" | 1" |
| PSA-120L-48-S | 120" | 1" | 12" | 48" x 21" | 20" x 14" | 20" x 14" | 18" | 1" |

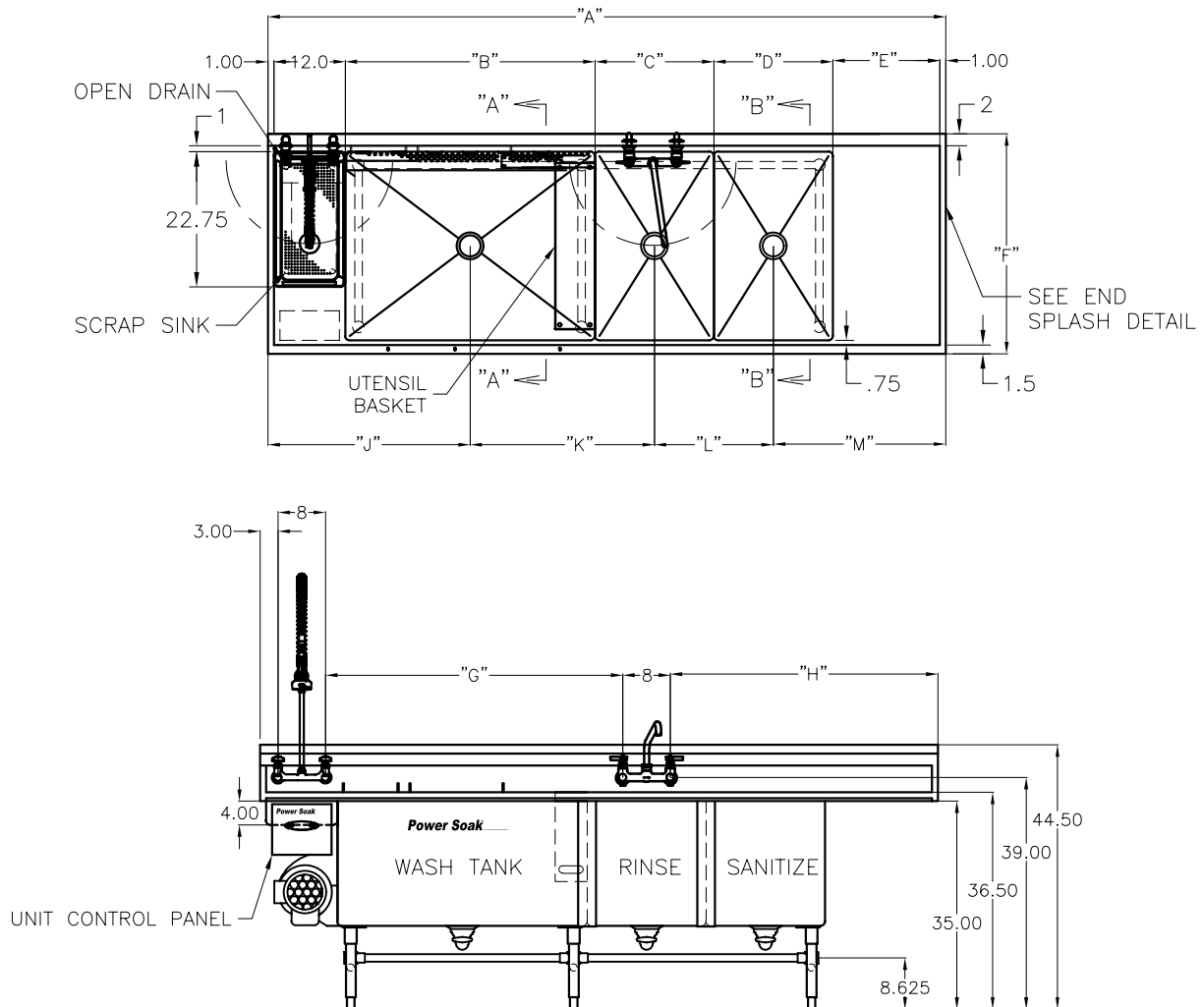
| STANDARDS, OPTIONS AND UPGRADES | | PSA-96L-36-S | PSA-102L-36-S | PSA-102L-42-S | PSA-108L-36-S | PSA-108L-42-S | PSA-114L-42-S | PSA-114L-48-S | PSA-120L-42-S | PSA-120L-48-S |
|-----------------------------------|--|--------------|---------------|---------------|---------------|---------------|---------------|---------------|---------------|---------------|
| WORK FLOW | Left to right | STD | STD | STD | STD | STD | STD | STD | STD | STD |
| | Right to left | OPT | OPT | OPT | OPT | OPT | OPT | OPT | OPT | OPT |
| 34" FRONT TO BACK TOP WASH TANK* | 34" Front to back top /36"L wash tank (2 HP motor) | STD | STD | N/A | STD | N/A | N/A | N/A | N/A | N/A |
| | 34" Front to back top /42"L wash tank (2 HP motor) | N/A | N/A | STD | N/A | STD | STD | N/A | STD | N/A |
| | 34" Front to back top /48"L wash tank (2 HP motor) | N/A | N/A | N/A | N/A | N/A | N/A | STD | N/A | STD |
| 37" FRONT TO BACK TOP WASH TANK** | 37" Front to back top /36"L wash tank (2 HP motor) | UPG | UPG | N/A | UPG | N/A | N/A | N/A | N/A | N/A |
| | 37" Front to back top /42"L wash tank (3 HP motor) | N/A | N/A | UPG | N/A | UPG | UPG | N/A | UPG | N/A |
| | 37" Front to back top /48"L wash tank (3 HP motor) | N/A | N/A | N/A | N/A | N/A | N/A | UPG | N/A | UPG |
| RINSE TANK DEPTH | 14" Depth | N/A | STD | N/A | STD | STD | STD | STD | STD | STD |
| | 18" Depth | STD | N/A | STD | N/A | N/A | N/A | N/A | N/A | N/A |
| | 21" Depth | UPG | N/A | UPG | N/A | N/A | N/A | N/A | N/A | N/A |
| SANITIZER TANK DEPTH | 14" Depth | N/A | STD | N/A | STD | STD | STD | STD | STD | STD |
| | 18" Depth | STD | N/A | STD | N/A | N/A | N/A | N/A | N/A | N/A |
| | 21" Depth | UPG | N/A | UPG | N/A | N/A | N/A | N/A | N/A | N/A |
| WASH TANK HEATER | 7.0 KW | STD | STD | STD | STD | STD | STD | STD | STD | STD |
| | 2.5 KW | OPT | OPT | OPT | OPT | OPT | OPT | OPT | OPT | OPT |
| CONTROL | PS-200 | STD | STD | STD | STD | STD | STD | STD | STD | STD |
| | PS-225 | UPG | UPG | UPG | UPG | UPG | UPG | UPG | UPG | UPG |
| VOLTAGE | 208v/3 PH , 26.7 Amps; [29.9 Amps] | STD | STD | STD | STD | STD | STD | STD | STD | STD |
| | 230v/3 PH, 24.0 Amps; [26.8 Amps] | OPT | OPT | OPT | OPT | OPT | OPT | OPT | OPT | OPT |
| | 480v/3 PH, 11.6 Amps; [12.9 Amps] | OPT | OPT | OPT | OPT | OPT | OPT | OPT | OPT | OPT |

STD = Standard feature, OPT = Option available at no charge, N/A = Option not available, UPG = Option available with upcharge,

*4" Front to back top only includes wash tank with 6" jet spacing and utensil basket

**37" Front to back top upgrade includes wash tank with 3" jet spacing, AWI with 2 sheet pan rack and utensil wash area

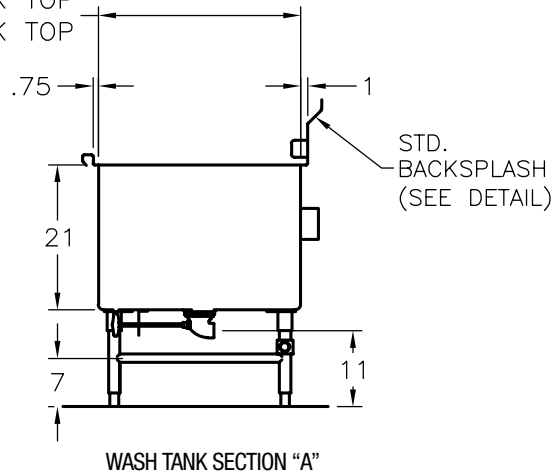
SAMPLE CONFIGURATION:



NOTE: LAYOUT AND DIMENSIONS ARE REVERSE FOR RIGHT TO LEFT WORK FLOW

| MODEL PART NUMBERS | UNIT DIMENSIONS (ALL UNITS ARE IN INCHES) | | | | | | | | | | | |
|-----------------------|--|-----|-----|-----|-----|---------|-----|-----|-----|-----|-----|-----|
| | "A" | "B" | "C" | "D" | "E" | "F" | "G" | "H" | "J" | "K" | "L" | "M" |
| PSA-96L-36-S | 96 | 36 | 16 | 18 | 12 | 34 / 37 | 42 | 35 | 31 | 26 | 17 | 22 |
| PSA-102L-36-S | 102 | 36 | 20 | 20 | 12 | 34 / 37 | 44 | 39 | 31 | 28 | 20 | 23 |
| PSA-102L-42-S | 102 | 42 | 16 | 18 | 12 | 34 / 37 | 48 | 35 | 34 | 29 | 17 | 22 |
| PSA-108L-36-S | 108 | 36 | 20 | 20 | 18 | 34 / 37 | 44 | 45 | 31 | 28 | 20 | 29 |
| PSA-108L-42-S | 108 | 42 | 20 | 20 | 12 | 34 / 37 | 50 | 39 | 34 | 31 | 20 | 23 |
| PSA-114L-42-S | 114 | 42 | 20 | 20 | 18 | 34 / 37 | 50 | 45 | 34 | 31 | 20 | 29 |
| PSA-114L-48-S | 114 | 48 | 20 | 20 | 12 | 34 / 37 | 56 | 39 | 37 | 34 | 20 | 23 |
| PSA-120L-42-S | 120 | 42 | 20 | 20 | 24 | 34 / 37 | 50 | 51 | 34 | 31 | 20 | 35 |
| PSA-120L-48-S | 120 | 48 | 20 | 20 | 18 | 34 / 37 | 56 | 45 | 37 | 34 | 20 | 29 |

28.75 = 34" FRONT TO BACK TOP
31.75 = 37" FRONT TO BACK TOP



28.75 = 34" FRONT TO BACK TOP
31.75 = 37" FRONT TO BACK TOP

