



# STEAMERS

## HYPERSTEAM PRESSURELESS ELECTRIC MODEL HY-5E/EF

Steamer shall be a Groen Model HY-5E stainless steel pressureless steamer with a self-contained atmospheric 15.5KW electric steam generator.



PROJECT NAME:	
LOCATION:	
ITEM NO:	
QTY:	
MODEL NO:	
AIA NO:	
SIS NO:	
CSI SECTION:	11400



Model HY-5E shown

### AVAILABLE MODELS:

- HY-5E (table top)
- HY-5EF (stand-mounted)

**CONSTRUCTION:** Steamer cavity and cabinet shall be all stainless steel construction, with removable right and left-side panels providing access to internal components. Steamer door is all stainless steel with a strong continuous hinge and is field-reversible for left or right swing, door shall be air insulated and provided with a one-piece, replaceable seal. Easy-open handle and latch shall provide positive lock and seal when door is pushed or slammed shut. Hidden magnetic door switch cuts power to blower and cuts power to generator when the door is opened. Pan support racks shall be polished stainless steel and removable for easy cleaning. A stainless steel condensate collection tray is positioned under cavity door.

**FINISH:** Cabinet exterior, including door, shall be finished to a #3 uniform finish. Cavity interiors are polished stainless steel. Control panel face plates shall be smudge-resistant polyester film, ensuring maximum ease in cleaning and maintaining an attractive appearance.

**UL & CUL LISTING:** Steamer shall be UL and Canadian UL-listed.

**SANITATION:** Unit shall be designed and manufactured to meet NSF requirements and be NSF-listed. Unit shall allow operator to delime steam generator through access port on top, without tools or service call. Push button auto-delime feature is standard.

**CONTROLS:** Steamer controls shall include an ON-OFF power button; 60-minute electro-mechanical timer, with continuous steam setting; and READY light which indicates when cavity is ready for steaming. Auto-Delime button initiates deliming cycle.

**PERFORMANCE FEATURES:** Steamer cavity shall have a powerful side-mounted blower, which increases steam velocity and provides efficient steam distribution throughout cavity and between loaded pans. Steam generator delivers 3.1 KW power input per 2-1/2" deep steam pan. Heat-up time to READY shall be 8-10 minutes or less under normal conditions. Cavity is kept warm and ready for instant steam between loads. No cavity warm up required, after READY light comes on. DELIME indicator light warns operator of need to delime steam generator. Unit will shut off if water level is low. When power switch is turned off, unit automatically blows down the steam generator, to reduce sediment build-up.

**ATMOSPHERIC STEAM GENERATOR:** Unit shall have an electric-heated, rear-mounted steam generator, to provide atmospheric steam to the chamber at a temperature of approximately 212°F. Steam generator has an electric water sensor. Electric heating element is replaceable from the side.

### PAN CAPACITY:

Pan Size/Type	Number
12 x 20 x 1"	10
12 x 20 x 2-1/2"	5
12 x 20 x 4"	3

**INSTALLATION:** Unit requires 208, 240 or 480 Volt, single or three-phase electric service. Unit requires two 3/4" NH cold water supply lines and 2" O.D. free venting drain.

### WATER QUALITY REQUIREMENTS:

Containment	Water Supply
pH	7 to 9
Total Dissolved Solids (TDS)	30 to 60 ppm
Hardness	less than 60 ppm
Chlorine and Chloramine	less than .1 ppm
Chlorides	less than 30 ppm
Silica	less than 12 ppm
Undissolved Solids	less than 5 microns

CONTINUED ON BACK...

### OPTIONS/ACCESSORIES:

- Groen PureSteam™ Water Treatment System
- Factory stacking kit
- Stainless steel support stand
- Pan racks for support stand
- 4" adjustable legs
- Single water connection (cold water)

### ADDITIONAL RESOURCES:

[Request A Quote](#)

[Sales Tools](#)

[Find A Rep](#)

HyPerSteam  
140807 RevE

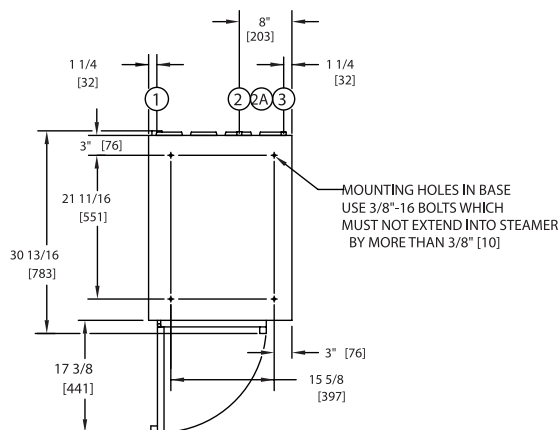
08/23

In order to accurately choose the correct water treatment solution, a water quality test has to be performed. If a "Free Start-up" is requested, the ASA will perform a water quality test and Unified Brands (UB) will be able to suggest the best solution for your water quality. If it isn't, your local manufacturing representative can coordinate this for you.

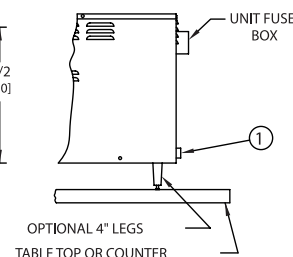
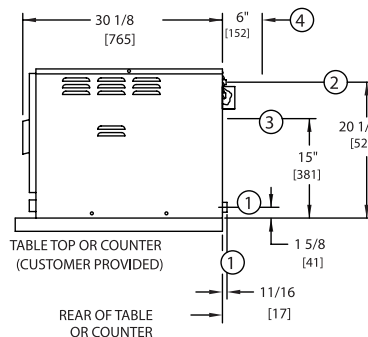
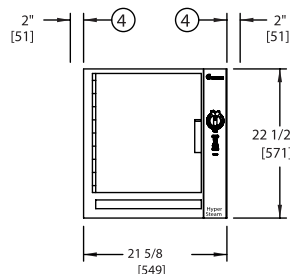
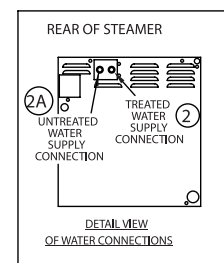
After the "Free Start-up" is performed, UB will add an additional 1-year parts and labor warranty. If UB suggests a water treatment system, the system is purchased from UB, installed and maintained, water related service issues will be covered for the duration of the warranty period.

#### SERVICE CONNECTIONS & NOTES:

- ① DRAIN CONNECTION: 2" [51] TUBE (DRAIN FREE VENTING)
- ② TREATED WATER SUPPLY AT 30 TO 60 PSIG WITH A FLOW RATE OF 0.75-1.50 GPM AND WITH TWO 3/4" NH CONNECTION
- ②A UNTREATED WATER SUPPLY AT 30 TO 60 PSIG WITH A FLOW RATE OF 0.75-1.50 GPM AND WITH TWO 3/4" NH CONNECTION
- ③ ONE ELECTRICAL CONNECTION: 1" [25] CONDUIT FITTING
- ④ MINIMUM REAR AND SIDE CLEARANCE: REAR = 6" [152]  
LEFT SIDE = 2" [51] RIGHT SIDE = 2" [51]

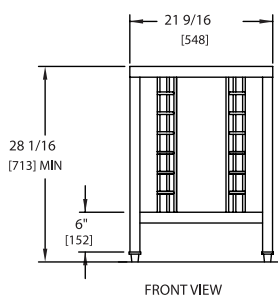


ELECTRICAL REQUIREMENTS			
VOLTAGE	PHASE	AMPS	MAX. KW
208	1	74.5	15.5
	3	44	15.5
240	1	64.6	15.5
	3	38.2	15.5
480	---	---	---
	3	19.1	15.5



DIMENSIONS IN BRACKETS [ ] ARE MM

#### OPTIONAL SUPPORT STAND



FINISHED FLOOR

OPTIONAL RACKS TO HOLD (6) STEAMER PANS

