



# STEAMERS

## HYPLUS PRESSURELESS WITH GAS BOILER MODEL HY-10SG

Pressureless steamer with gas heated pressure boiler mounted in a cabinet base.

**CONSTRUCTION:** Steamer cavities and cabinet base are all stainless steel construction. Steamer unit has a unitized body, with removable lift-off panels providing access to internal components. Steamer doors are all stainless steel with a strong continuous hinge and are field-reversible for left or right swing. Doors are insulated and provided with a one-piece, replaceable seal. Easy-open handle and latch provides a positive lock and seal when door is pushed or slammed shut. Hidden magnetic door switch cuts power to blower and steam flow to that cavity, when the door is opened. Pan support racks are electro-polished stainless steel and removable for easy cleaning. Wide drip sink with condensate drain is positioned under cavity doors. Cabinet base has a stainless steel frame with all stainless steel top deck, removable lift-off panels standard. Front and rear legs have adjustable bullet feet. Flanged feet are an available option.

**FINISH:** Cabinet exterior, including doors, are finished to a #3 uniform finish. Cavity interiors are electro-polished stainless steel. Control panel face plates are smudge-resistant polyester film.

**CONTROLS:** Steamer cavity controls are mounted on the front panel for easy replacement or repair and include a separate ON-OFF 60-minute timer control with a constant steam setting, for each cavity. Gas boiler is provided with a gas control valve, power-ON switch, RESET light, start switch, low water sensor, pop safety valve, water level sight glass on front panel and outside cabinet-mounted pressure gauge.

**PERFORMANCE FEATURES:** Unit will shut off if water level is low or unit builds too much pressure. When power switch is turned "OFF," the boiler automatically drains to reduce sediment build-up, after water has cooled to 130°F. Each steamer cavity has a powerful side-mounted blower, which increases steam velocity and provides efficient steam distribution throughout cavity and between loaded pans. Boiler is constructed for 15 PSI maximum, 200,000 BTU/hr input per 2 1/2" deep steam pan capacity. Unit comes standard with electronic ignition.

**CABINET BASE STEAM SOURCE:** Unit has a gas-heated, cabinet-mounted pressure boiler to provide atmospheric steam to each chamber at a temperature of approximately 212°F. The 200,000 BTU generator delivers 3.7 boiler horsepower. Unit comes standard with electronic ignition.

### PAN CAPACITY:

Pan Size/Type	Per cavity	Total
12 x 20 x 1"	10	20
12 x 20 x 2-1/2"	5	10
12 x 20 x 4"	3	6

**INSTALLATION:** Unit requires gas service via 1/2" NPT pipe or approved equivalent. Specify type of gas. Unit requires two 1/2" NPT cold water supply line, 1 1/4" NPT free venting drain; and 115 volt, single phase, 60 cycle 15 AMP electric service, 4 AMP maximum load.

**STEAM SOURCE FOR ADJACENT EQUIPMENT:** A 1/2" NPT power take-off valve is standard on all gas units. To ensure proper performance boiler must be properly sized to meet boiler horsepower requirements of steamer cavities and additional equipment. Appropriate steam traps and piping must be professionally installed.

### WATER QUALITY REQUIREMENTS:

Containment	Water Supply
pH	7 to 9
Total Dissolved Solids (TDS)	30 to 60 ppm
Hardness	less than 60 ppm
Chlorine and Chloramine	less than .1 ppm
Chlorides	less than 30 ppm
Silica	less than 12 ppm
Undissolved Solids	less than 5 microns

CONTINUED ON BACK...

Certifications:



PROJECT NAME:	
LOCATION:	
ITEM NO:	
QTY:	
MODEL NO:	
AIA NO:	
SIS NO:	
CSI SECTION:	11400



### OPTIONS/ACCESSORIES:

- Flanged Feet
- Independent Water Supply For Condensate Spray
- Single Water Connection

### ADDITIONAL RESOURCES:

[Request A Quote](#)

[Sales Tools](#)

[Find A Rep](#)

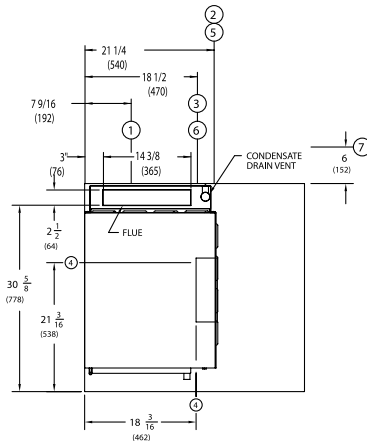
In order to accurately choose the correct water treatment solution, a water quality test has to be performed. If a "Free Start-up" is requested, the ASA will perform a water quality test and Unified Brands (UB) will be able to suggest the best solution for your water quality. If it isn't, your local manufacturing representative can coordinate this for you.

After the "Free Start-up" is performed, UB will add an additional 1-year parts and labor warranty. If UB suggests a water treatment system, the system is purchased from UB, installed and maintained, water related service issues will be covered for the duration of the warranty period.

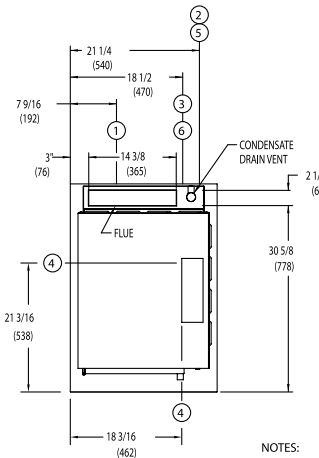
#### SERVICE CONNECTIONS:

- ① DRAIN CONNECTION: 1 1/4"(42) NPT (INCLUDES AUTOMATIC & MANUAL BOILER, STEAMERS, CONDENSATE SPRAY, KETTLE & SINK)
- ② TREATED WATER SUPPLY: 1/2"(21) NPT (BOILER, & FAUCET)
- ③ UNTREATED WATER SUPPLY: 1/2"(21) NPT (CONDENSATE SPRAY)
- ④ HOT WATER SUPPLY: 3/8" NPT (FOR FAUCET)
- ⑤ ELECTRICAL CONNECTION: 7/8"(22) DIA. HOLE (1/2" CONDUIT KNOCK-OUT)
- ⑥ GAS CONNECTION: 1/2"(21) NPT
- ⑦ STEAM POWER TAKE-OFF: 1/2"(21) NPT

	NATURAL GAS	PROPANE GAS
GAS OPERATING PRESSURE	3.5" W.C.	10.0" W.C.
RECOMMENDED INCOMING GAS FEED RATE	5"W.C. MIN 14"W.C. MAX	11"W.C. MIN 14"W.C. MAX
MAX. INPUT-BTU/HR	200,000	
MAX. OUTPUT-BTU/HR	120,000	
STEAM GENERATOR HORSEPOWER: 3.7		

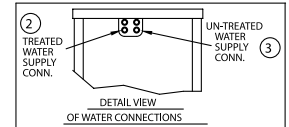


TOP VIEW  
36" CABINET



TOP VIEW  
24" CABINET

#### DIMENSIONS: INCHES (MILLIMETERS)



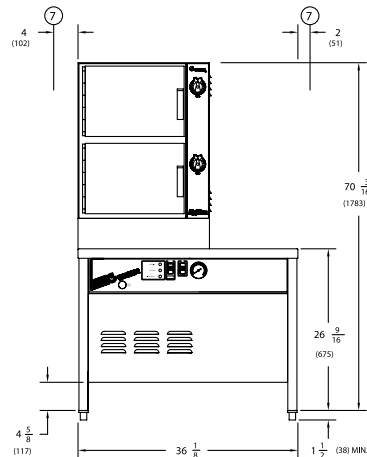
#### NOTES:

1. MINIMUM CLEARANCE FROM COMBUSTIBLE MATERIALS

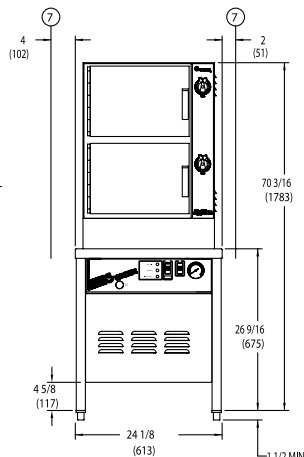
RIGHT SIDE 2"(51)

LEFT SIDE 4"(102)

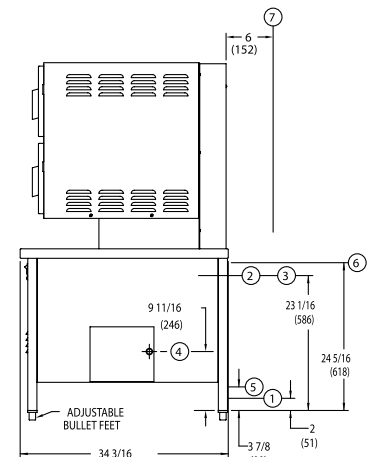
REAR 6"(152)



FRONT VIEW  
36" CABINET



FRONT VIEW  
24" CABINET



RIGHT SIDE VIEW  
ALL CABINET