



CHEF SERVICE COUNTER

CUSTOM ADD ON UNIT MODELS 90000

Add on units with 16 gauge reinforced tops, and integral backsplash with 45° return. 6" high adjustable legs.

SHORT FORM SPEC: Randell 90000 series utility stand with 16 gauge stainless steel top reinforced with two full length channel braces and integral 6.75" coved backsplash with 45° return at top. Unit shipped on standard 6" high adjustable legs mounted to full length channel frame assembly allowing movement of legs to avoid floor obstacles.

AVAILABLE MODELS:

91327
92333
93324
93346
93368

STANDARD FEATURES:

- Available under one piece top with other modular units up to 16' in length
- 6" high legs—adjustable and movable
- 45° integral stainless backsplash providing access to electrical chase is standard. 90° stainless backsplash is optional.

SPECIFICATIONS: Tops to be one piece of die formed 16 gauge stainless steel with 2-5/8" nosing. Backsplash to be coved cornered, with 45° return at top and overall height of 6 3/4". Ends at top fitted with recessed heavy duty steel bars for field bolting units together, producing a hairline seam. Body ends to be corrosion resistant steel. Legs to be 6" high stainless steel with adjustable bullet foot. Legs mounted to full length channel frame assembly which is integrally welded to bottom of body assembly. Legs can be moved left to right to avoid floor obstacles during installation.

Certifications:



PROJECT NAME:	
LOCATION:	
ITEM NO:	
QTY:	
MODEL NO:	
AIA NO:	
SIS NO:	
CSI SECTION:	11400

OPTIONS/ACCESSORIES:

Dimensional modification (L,D,H)
Mitered/angled corner
Backsplash removed, modified
Stainless riser/divider, end splash
Urn trough
14 gauge top
Cutting board
Marine edge top
Stainless steel end(s), back panel
Laminated end(s), back panel
Electrical connections
Curb mount
Channel base
Casters

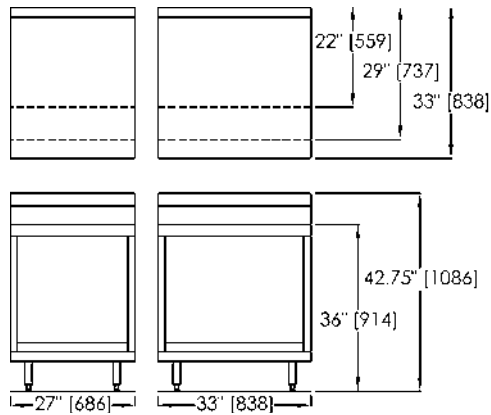
ADDITIONAL RESOURCES:

[Request A Quote](#)

[Sales Tools](#)

[Find A Rep](#)

91000 Series & 92000 Series
Units with 16 gauge reinforced
stainless steel top. To enclose built-in
food warmer. Warmer supplied by
others, installed by Randell. On 6"
high adjustable and movable legs.-
unfinished ends.



93000 Series
Unit with 16 gauge reinforced
stainless steel top. To hold glass
or cup racks. 6" or 8" spacing of
angles. Full, partial or no top cut
back to be provided, as specified. On
6" high adjustable and moveable legs
- unfinished ends.

