



# POWER SOAK SYSTEM

## UNLIMITED CONTINUOUS POT, PAN & SHEET PAN WASHING SYSTEM WITH 3" SPACED WASH JETS, MODEL PSU3

The Power Soak Advanced System is a three-bay continuous pot, pan and sheet washing system with custom configured lengths and options. The patented Parallel Wash System's washing wave action, with wash jets located every 3 inches along the back wall of the wash tank, continuously rotates wares from the back of the wash tank up to the operator in hot soapy water that removes baked-on food soils, providing unparalleled results with an excellent ROI.

Certifications:



PROJECT NAME:	
LOCATION:	
ITEM NO:	
QTY:	
MODEL NO:	
AIA NO:	
SIS NO:	
CSI SECTION:	11400



### STANDARD SPECIFICATIONS:

- System custom configurable per quote or drawing
- Available left to right or right to left operation, 34" or 37" front to back depth
- All tanks and tabling, 14 gauge, 304 stainless steel
- System conforms to ANSI/NSF Standard 2 with all welds to be heliarc (TIG) welds
- Backsplash to be 9.5" overall height - 6" vertical with 45 degree angle to wall with 1-½" turn up
- Wash tank shall be 28.75" or 31.75" I.D standard front to back to back by 21" deep, 30" - 72" in length (increasing/decreasing in 6" increments)
- Parallel Wash Flow with low profile wash jets spaced every 3" flush along the back wall of wash tank & above the wash pump intake
- 2 HP Wash Pump Motor (30 & 36" Tank) or 3 HP Wash Pump Motor (42 & 48" Tank) with stainless steel impeller, pump housing and wash manifold
- Stainless steel wash pump intake to run full length of the rear of the wash tank below wash jets
- Stainless steel wash pump housing fully self-draining with no use of drain line or valve
- Wash Tank to have Advanced Wash Insert (AWI) – consisting of (1) ultra-high molecular weight polyethylene (UHMW) flexible tank divider, or (2) with sheet pan racks, (UHMW) wash tank flow guides, high density polyethylene (HDPE) rib system integrally connected with sst rods and 1/8" thick UHMW tank liner form fitting to bottom of wash tank
- Utensil Section to be powered by one dedicated wash jet
- Dual liquid high & low water level sensors
- Bottom of wash tank creased to facilitate draining
- 7000 watt wash tank heater maintains wash tank temperature at 115° +/- ½ °F
- Chemical injection points pre-drilled at factory
- Rinse Sink and Sanitizer Sink each shall be 28.75" or 31.75" I.D. front to back
- Soiled tabling custom configurable incorporating various pre-scrapping systems: i.e.: scrap sinks, disposers, collectors, pulpers or custom design scarping areas
- Drains & faucets included, but optional

### CONTROLS:

PS-200: Timed wash cycle, wash tank heat, sanitizer tank cycle monitoring. All controls include at minimum:

- Four hour wash timer
- Low voltage power is supplied to all operator controls and sensors
- Operator controls - Green (ON)/Red (OFF) buttons
- Automatically monitors and regulates wash water temp
- Monitors high and low liquid levels in both the wash tank and sanitizer tank
- Meets UL 50, category 4X specifications

PS-225: All PS-200 features included plus adjustable sanitizer tank cycle monitoring, batch washing, non-intrusive function lights (see Control Specification for more detailed features)

PS-275: All PS-225 features included plus overnight wash cycle (see Control Specification for more detailed features)

### INSTALLATION REQUIREMENTS:

- Unit requires hot and cold water connections
- Drain connections
- Single point electrical connection

**WARRANTY:** 3 years for parts and labor

### ADDITIONAL RESOURCES:

[Request A Quote](#)

[Sales Tools](#)

[Find A Rep](#)

**ELECTRICAL CONNECTION OPTIONS:**
**DOMESTIC 60HZ:**

WASH TANK SIZES 30", 36", 42",  
48" – 2 HP MOTOR (7 KW WASH TANK  
HEATER)

208V/60/1, 45.1 Amps

208V/60/3, 26.7 Amps

230V/60/1, 39.8 Amps

230V/60/3, 24.0 Amps

480V/60/3, 11.6 Amps

**INTERNATIONAL 50HZ:**

WASH TANK SIZES 30", 36", 42",  
48" – 2 HP MOTOR (7 KW WASH TANK  
HEATER)

380V/50/3 – 15.4 Amps

**CONFIGURATION & ACCESSORY  
OPTIONS:**

Advanced wash sheet pan racks  
(18" x 26" sheet pans) – 2, 6 &  
10 sheet pan racks - (available  
only for 37" front to back system)

Hemmed end splash

1" end splash

Channel end splash

Backsplash end splash

Filled end splash

Channel front rim

Rolled front rim

Turned up back splash

Turned down back splash with  
"z" clips

Back splash extensions

Up to 21" rinse or sanitizer tank  
in depth

Welded field joint

Mechanical filed joint (JBZ)

Welded leg sets

Advanced Wash Insert (AWI)

Advanced Wash Insert (AWI) –  
sheet pan rack system (available  
only for 37" front to back system)

Under shelves

Over shelves

Automatic chemical dispenser

2.5 kw wash tank heater (7kw –  
standard)

Remote silent alert for PS-225 &  
PS-275 controls

Quick disconnect pre-rinse  
sprayers

Electrical disconnect

Sanitizer tank accommodation  
for 180 degree recirculating hot  
water booster

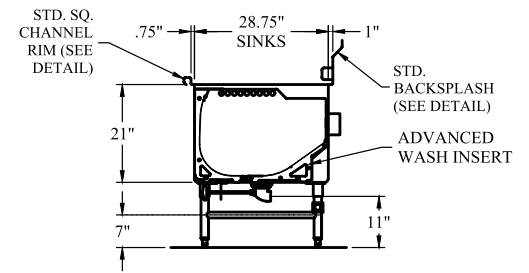
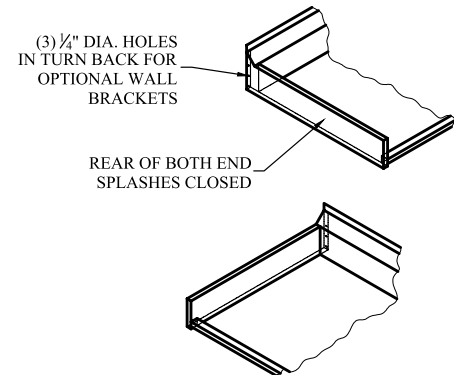
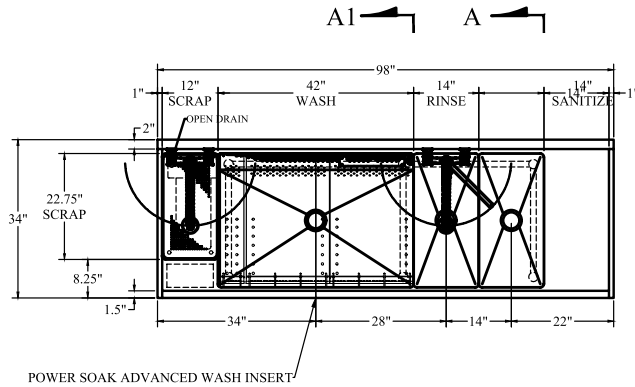
Mixing valves

Drying racks for clean drain  
board

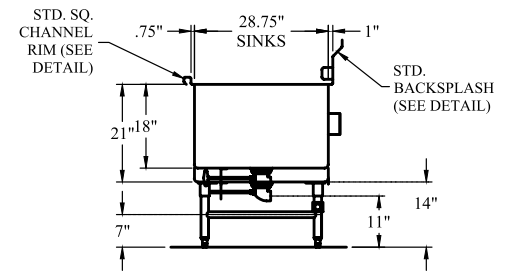
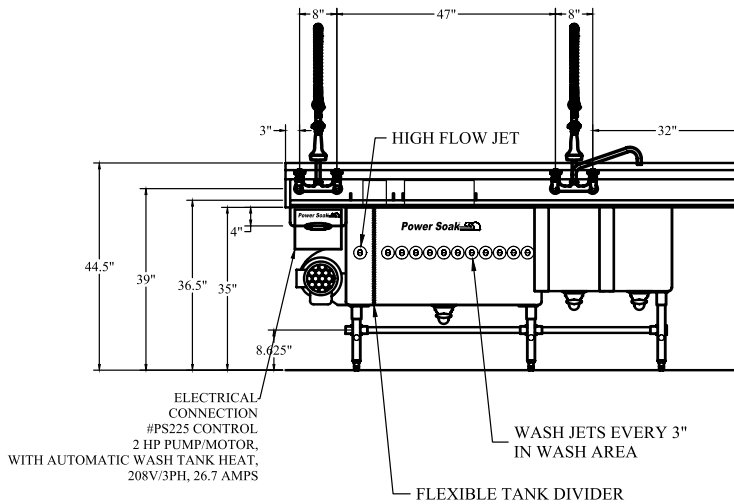
Overflows for rinse and/or  
sanitizer tank

Length	BELOW CHART SHOWS A SAMPLE CONFIGURATION OF UNIT FROM LEFT TO RIGHT							
	End Splash	Soiled Drain Board	Scrap Sink	Wash Tank	Rinse Tank	Sanitizer Tank	Clean Drain Board	End Splash
98"	1"	-	12"	42" x 21"	14" x 18"	14" x 18"	14"	1"
132"	1"	12"	12"	48" x 21"	20" x 14"	20" x 14"	18"	1"

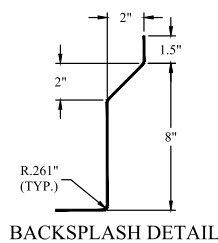
**SAMPLE CONFIGURATION:**



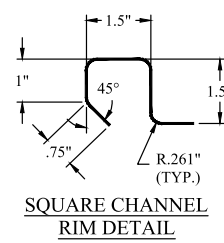
**SECTION "A1"**



**SECTION "A"**

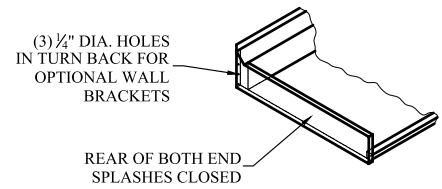
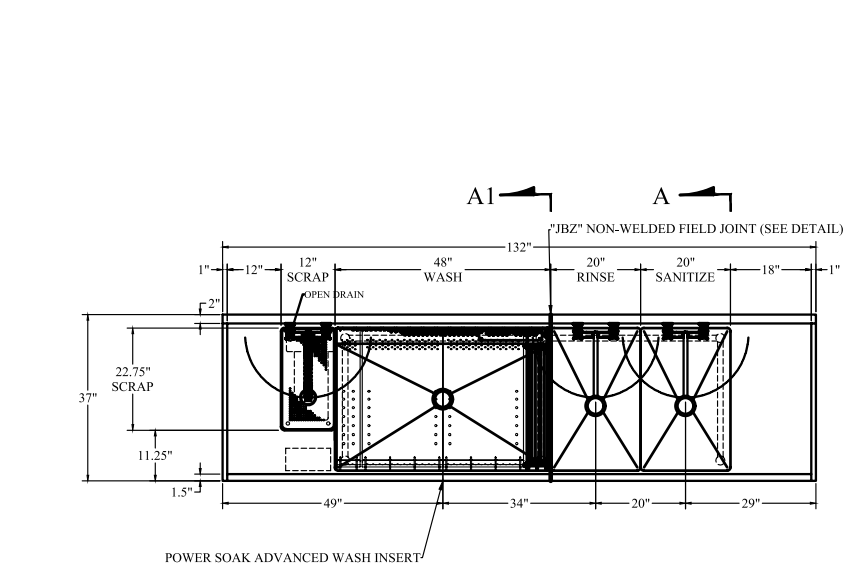


**BACKSPLASH DETAIL**

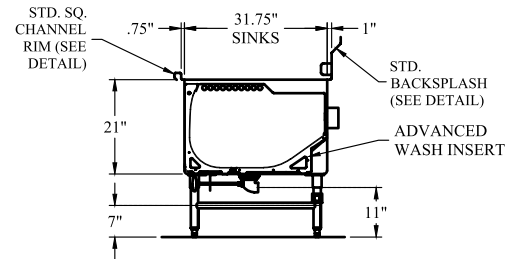


**SQUARE CHANNEL RIM DETAIL**

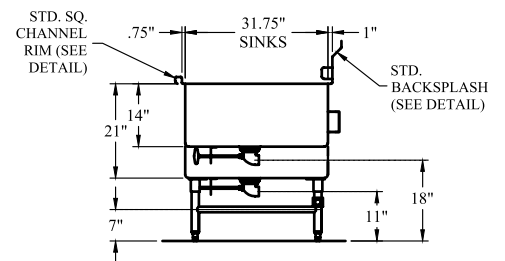
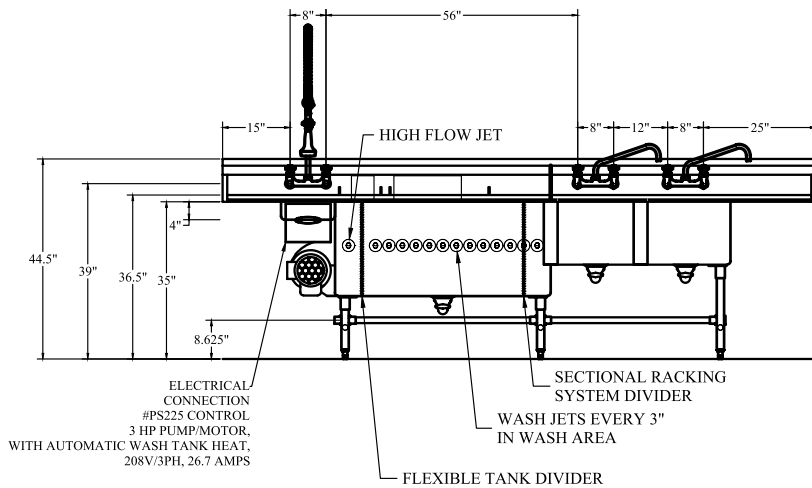
**SAMPLE CONFIGURATION:**



**TYPICAL ENDSPLASH DETAILS**



**SECTION "A1"**



**SECTION "A"**

