



# CHEF SERVICE COUNTER

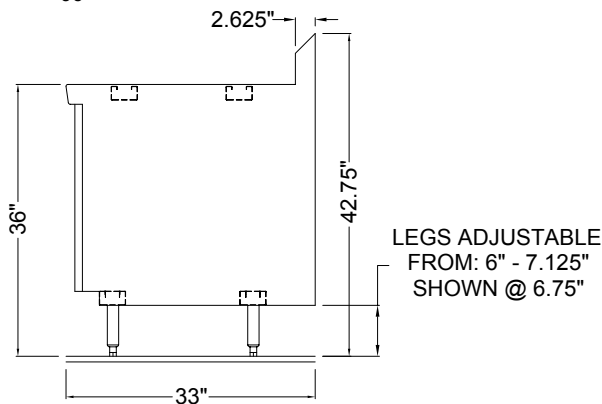
## CUSTOM TOP EXTENSION MODELS 19000

Top extension (open to floor) utility stand with 16 gauge reinforced stainless top, an integral backsplash with 45° return, and removable front panel. 6" high adjustable legs.

**SHORT FORM SPEC:** Randell top extension utility stand with 16 gauge stainless steel top reinforced with two full length channel braces and integral 6.75" coved backsplash with 45° return at top. Open to the floor with removable stainless steel front panel, shipped on 6" high adjustable legs mounted to full length channel frame assembly.

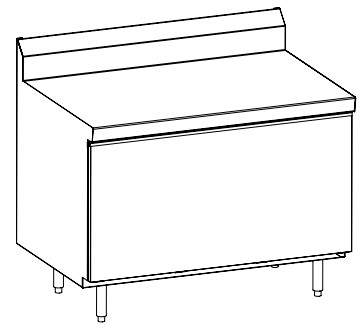
### AVAILABLE MODELS:

Up to 18"  
24"  
36"  
48"  
60"  
72"  
84"  
96"



MODEL	L	D	WORK H	OVERALL H	SHIP WT. LBS
19324	24"	33"	36"	42.75"	120
19336	36"	33"	36"	42.75"	160
19348	48"	33"	36"	42.75"	200
19360	60"	33"	36"	42.75"	240
19372	72"	33"	36"	42.75"	280
19384	84"	33"	36"	42.75"	320
19396	96"	33"	36"	42.75"	360

PROJECT NAME:	
LOCATION:	
ITEM NO:	
QTY:	
MODEL NO:	
AIA NO:	
SIS NO:	
CSI SECTION:	11400



Model 19348 shown with optional stainless steel end panel

### OPTIONS/ACCESSORIES:

Dimensional modification (L,D,H)  
Cutout in top, trash chute  
Mitered/angled corner  
Backsplash removed, modified  
Stainless riser/divider, end splash  
Urn trough  
14 gauge top  
Cutting board  
Marine edge top  
Drawers  
Stainless steel end(s), back panel  
Laminated end(s), back panel, front  
Electrical connections, breaker panel  
Sinks; Handwash, Utility, Dipperwell  
Built-In Coldpan  
Built-In Hot well, Soup well  
Drop-in Ice, Ice/water station  
Curb mount  
Channel base  
Casters

### ADDITIONAL RESOURCES:

[Request A Quote](#)

[Sales Tools](#)

[Find A Rep](#)