



# KETTLES

## TILTING KETTLE GAS MODELS DH

Cook-Chill kettle, self-contained, high efficiency 360,000 BTU/hr gas fired, hemispheric bottom steam jacketed kettle. Electrically driven worm gear tilts kettle body to simplify product loading, kettle cleaning and transfer of non-pumpable products. 50 PSI maximum jacket operating pressure, 3" air operated drop down outlet valve.

### AVAILABLE MODELS:

DH-100 (100 GALLON)  
DH-125 (125 GALLON)

### CONSTRUCTION:

- 50 PSI, ASME Code hemispheric bottom kettle jacket construction and National Board registered
- C.S.A. Design Certified and NSF listed
- High efficiency fin tube gas heat exchanger with 360,000 BTU/hr maximum power input
- Reinforced bar rim and flow control pouring lip
- Electrically driven worm gear tilt of kettle body for pouring and cleaning
- Electronic ignition
- 3" air operated drop down stainless steel outlet valve mounted flush to kettle bottom
- Type 316 stainless steel kettle interior and all wetted parts, type 304 elsewhere
- 3/4" rim mounted water fill faucet
- Compressed air connection for CapKold® Pump/Fill Station (see CKPF/3)
- NSF listed

### INTEGRAL CONTROL PACKAGE:

- Android touch screen comes with English or Spanish, Gallons or Liters, and Fahrenheit or Celsius at a touch
- Digital product temperature indicator/controller
- Pilot light indicator
- Power ON indicator light
- Kettle body tilt switch and indicator
- Low water (kettle jacket) indicator light
- Pre-set automatic water metering with real time display

Certifications:  

|               |       |
|---------------|-------|
| PROJECT NAME: |       |
| LOCATION:     |       |
| ITEM NO:      |       |
| QTY:          |       |
| MODEL NO:     |       |
| AIA NO:       |       |
| SIS NO:       |       |
| CSI SECTION:  | 11400 |



DH-100 model shown

### OPTIONS/ACCESSORIES:

Product Temperature Paperless Chart Recorder (saves data as a PDF)

2 Piece Hinged Cover

Removable Pouring Lip Mounted Product Strainer

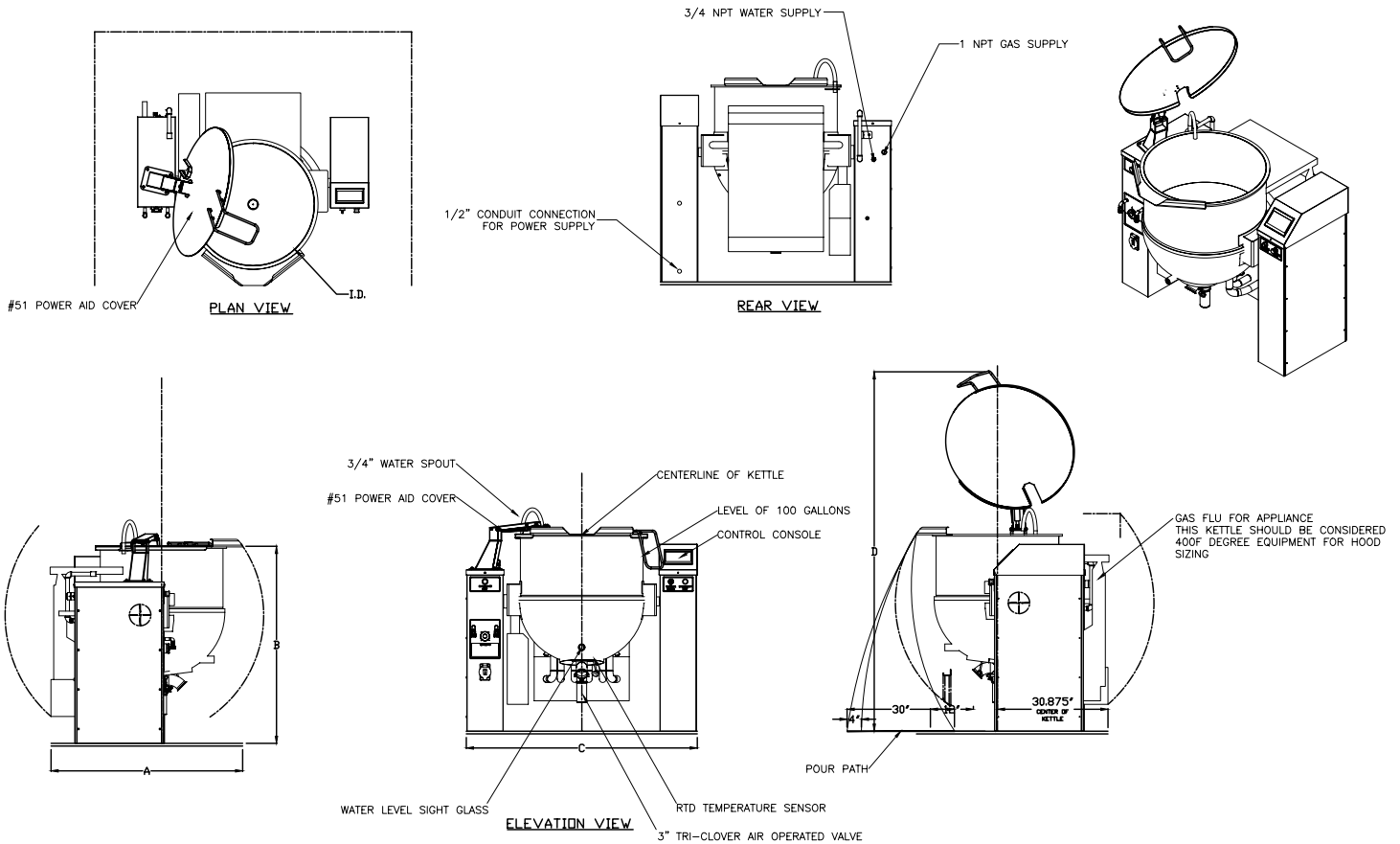
Prison Package

### ADDITIONAL RESOURCES:

[Request A Quote](#)

[Sales Tools](#)

[Find A Rep](#)



## PRODUCT SPECIFICATIONS:

1. ALL DIMENSIONS ARE EQUIPMENT DIMENSIONS
2. INPUT RATE: MAX 360,000 BTU/HR
3. ELECTRICAL SUPPLY VOLTAGE:  
208/3/60 - 7 AMPS  
240/3/60 - 7 AMPS  
480/3/60 - 3.5 AMPS  
ELECTRICAL CONNECTION 1/2" CONDUIT

4. TOUCH SCREEN CONTROL

5. 1" NPT GAS SUPPLY

| INCOMING GAS SUPPLY PRESSURES |          |          |
|-------------------------------|----------|----------|
| GAS TYPE                      | MINIMUM  | MAXIMUM  |
| NATURAL                       | 7" W.C.  | 10" W.C. |
| PROPANE                       | 11" W.C. | 14" W.C. |

6. 50 PSI ASME APPROVED

7. NO AGITATOR

8. ELECTRIC MOTOR DRIVEN POWER TILT FEATURE

9. APPROX. SHIPPING WEIGHT: 1550 LBS

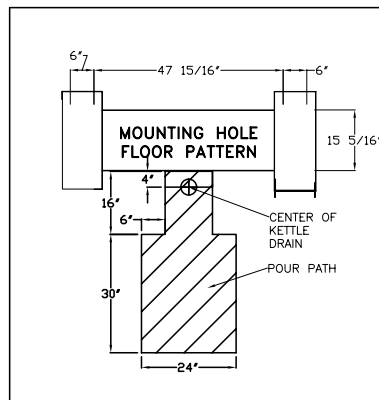
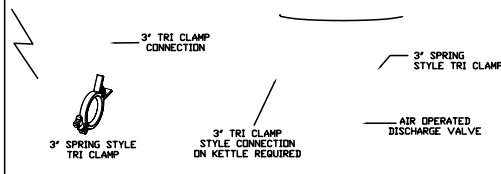
10. COLD WATER SUPPLY - 3/4" HOSE CONNECTION  
10 GPM @ 30 PSI  
(SUPPLY 30 PSI MIN. & 60 PSI MAX.)

12. 12" SERVICE CLEARANCE REQUIRED

13. UNIT MUST BE MOUNTED ON NON-COMBUSTIBLE FLOORING AND SEALED AT BASE WITH CAULKING.

|        | I.D. | A     | B   | C   | D    |
|--------|------|-------|-----|-----|------|
| DH-100 | 34"  | 53.5" | 55" | 64" | 100" |
| DH-125 | 34"  | 53.5" | 59" | 64" | 104" |

## KETTLE DISCHARGE VALVE AND HOSE CONNECTIONS



179475