



POWER PREP

ADVANCED FREE FLOWING WASH ACTION MODELS PPA4B-84L-208-1

The Power Prep provides patented, free flowing wash action, reaching hard to reach areas on produce in a 4-bay configuration. NSF approved for washing whole, uncut and cut, unpeeled, fruits and vegetables.

STANDARD SPECIFICATIONS:


- Left to right (L) flow
- Patented wash flow design allows for washed produce to be automatically collected into the stainless steel unloading baskets
- Removable wash jet channel
- Removable wash pump intake screen
- Three positional reverse flushing system of wash pump housing, wash pump impeller and wash pump manifold
- Hemmed end splash
- 17.7" Solid drain board
- Wash tank 36.3" X 19", divided into 4 bays with flexible tank dividers
- 30" Clean drain board
- 1/2" faucet with pre-rinse
- 1-1/2" Ball drain valve
- Custom configurations available, including tabling, shelving, and accessories
- Low profile wash jets average every three inches along the back wall of wash tank above the wash tank intake with removable jet block – wash jets provide free flowing uniform wash action
- Wash tank to have ultra-high molecular weight polyethylene (UHMW) flexible tank dividers, (UHMW) wash tank bay flow guides, high density polyethylene (HDPE) rib system integrally connected with stainless steel rods
- Stainless steel self-draining pump housing and impeller, all wetted parts of the pump assembly are stainless steel
- Wash tanks supported by 1-5/8" stainless diameter legs with 1-1/4" stainless cross members and adjustable stainless steel bullet feet
- Type 304 stainless steel construction throughout tanks, drain boards, splashes and channel rims (14 gauge)
- High quality 1/2" faucet assembly with pre-rinse spray
- Rear-exit stainless ball valve drain for 100% drainage
- 3/4 HP heavy duty (TEFC) wash pump motors (high service factor) are provided with all stainless steel pump assemblies
- Modular design allows quick and easy access to: motor, pump and all major components
- 208V/60/1, 4.1 Amps
- Flow guides

CONTROLS:

PS-50: Pistol Grip ON/OFF mechanical Start/Stop switch

WARRANTY:

- Three year parts and three year labor warranty from the date of shipping (USA only)
- Flow guides 1 year

Certifications: 

PROJECT NAME:	
LOCATION:	
ITEM NO:	
QTY:	
MODEL NO:	
AIA NO:	
SIS NO:	
CSI SECTION:	11400



OPTIONAL ACCESSORIES:

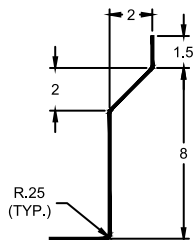
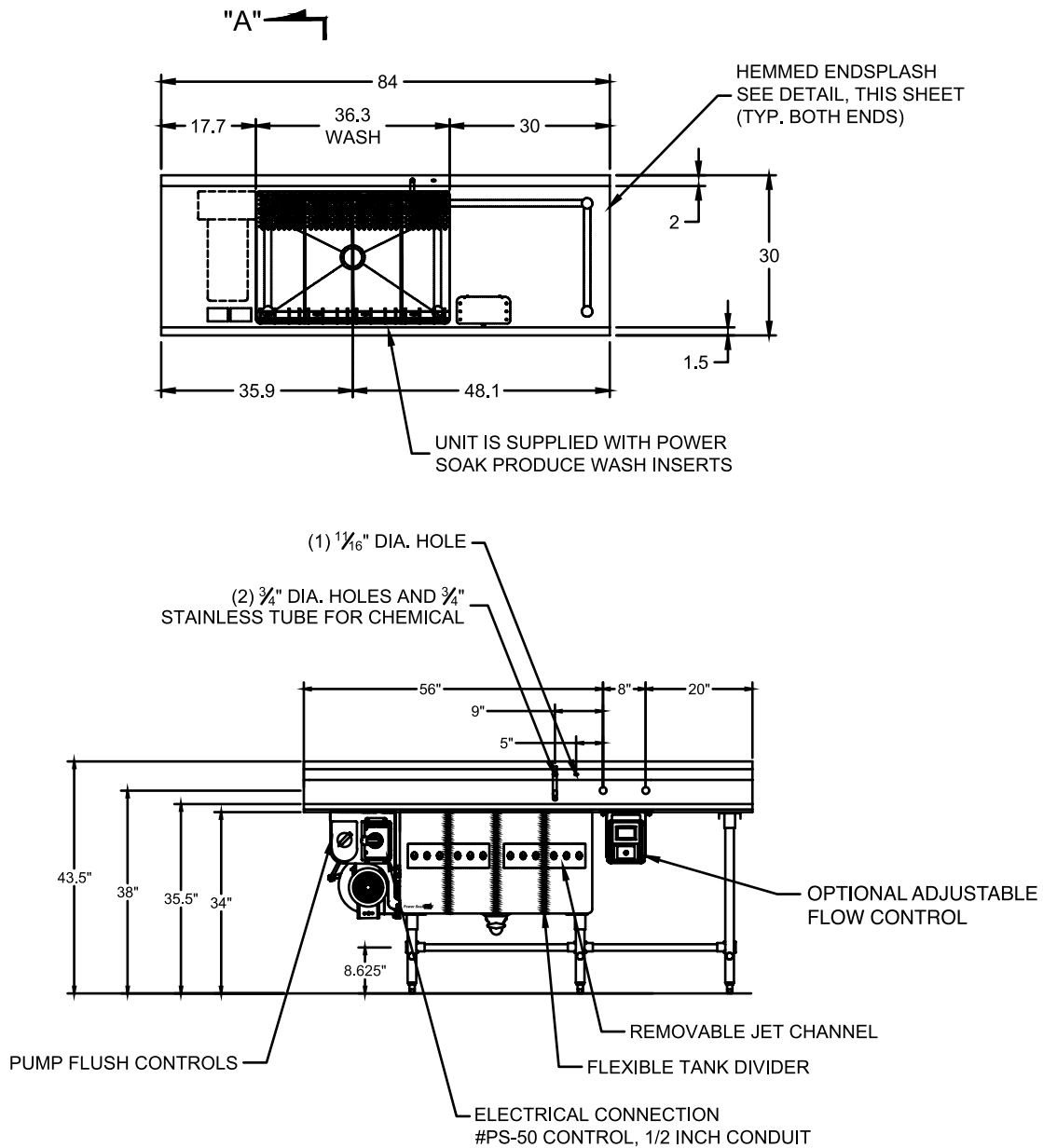
- ☐ Adjustable Flow Control (AFC)
- ☐ Stainless steel backsplash extensions
- ☐ Unload baskets
- ☐ Strainer for unload basket
- ☐ Over and under shelves
- ☐ Fry cutter basket

ADDITIONAL RESOURCES:

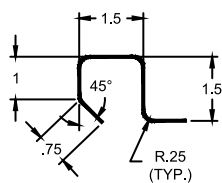
[Request A Quote](#)

[Sales Tools](#)

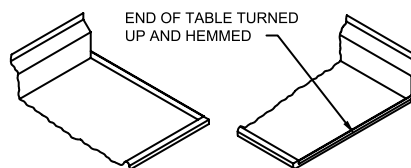
[Find A Rep](#)



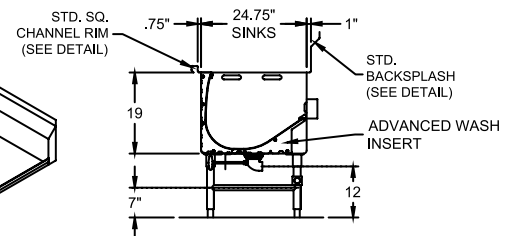
BACKSPLASH DETAIL



SQ. CHANNEL RIM DETAIL



HEMMED ENDSPLASH DETAIL



SECTION "A"